



OSWELL + NITISHIN
 ARCHITECTURE
 LAND DEVELOPMENT
 1234 POWERS FERRY COMMONS
 SUITE 105
 MARIETTA, GEORGIA 30067
 770-956-8879 TELEPHONE
 770-956-8931 FACSIMILE

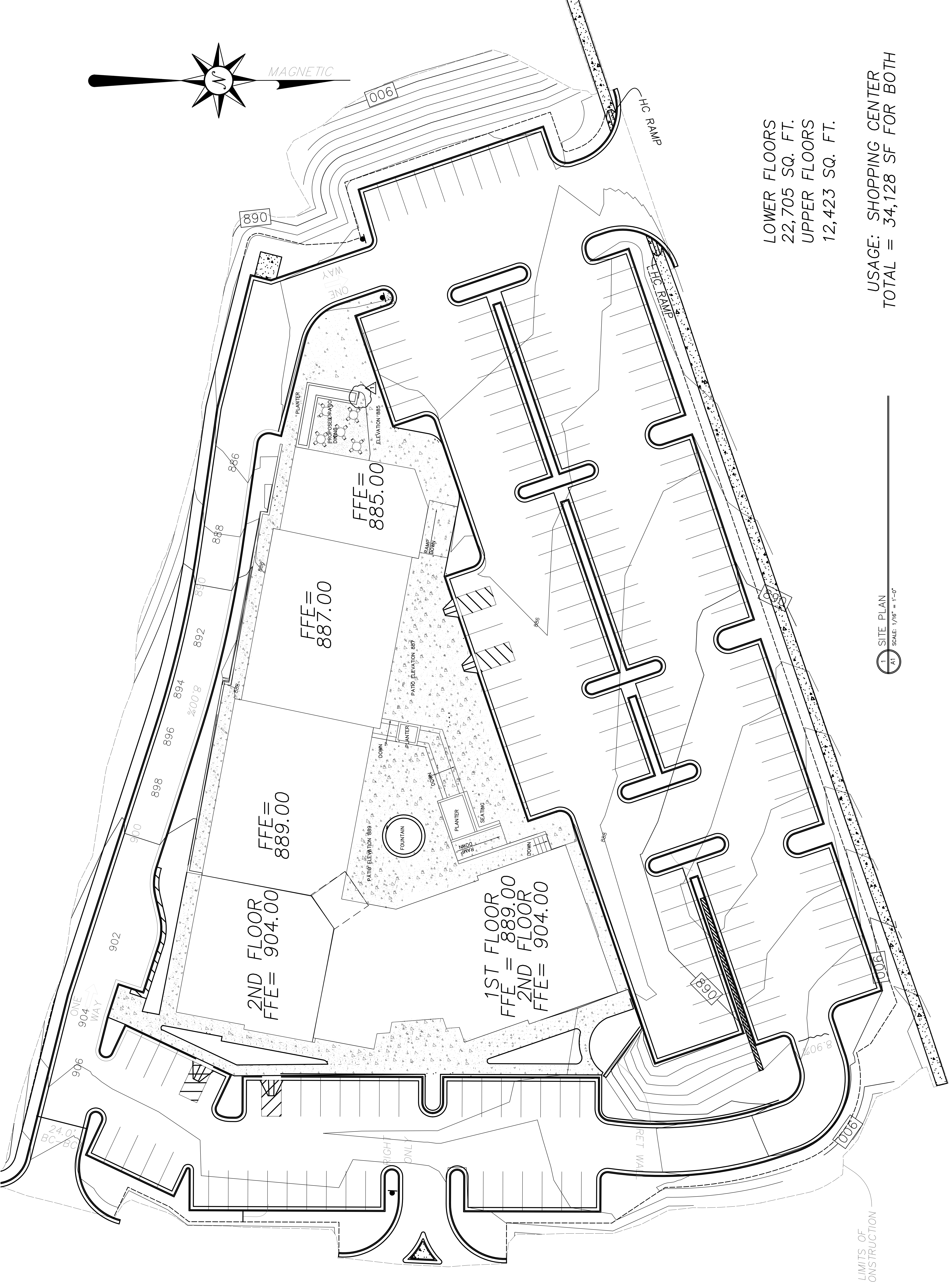
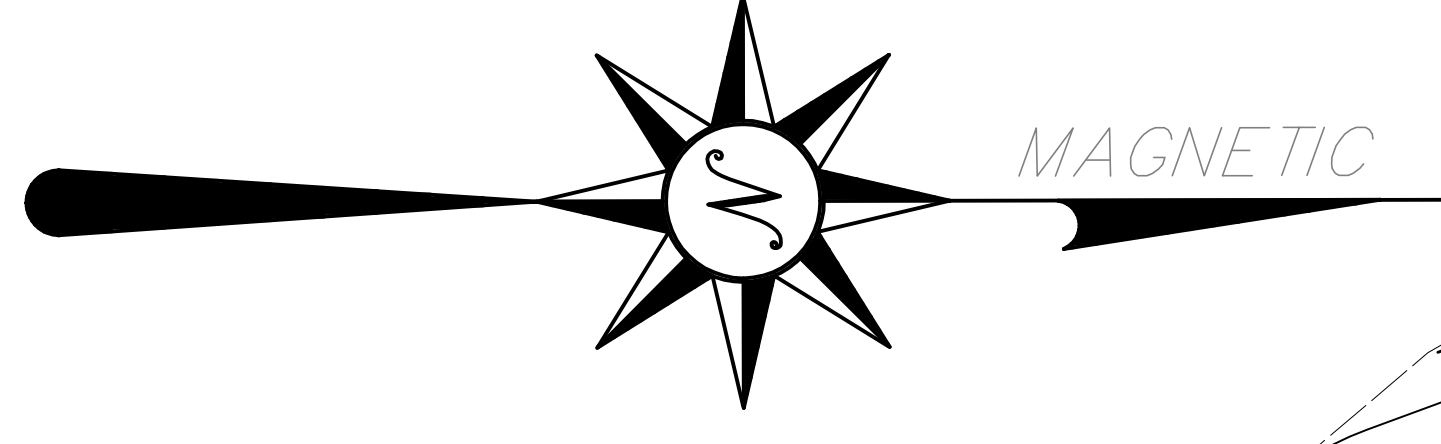
THIS DRAWING IS AN INSTRUMENT OF
 SERVICE AND REMAINS THE PROPERTY OF
 OSWELL AND NITISHIN ARCHITECTS, P.C.

HIGHLANDS
RETAIL CENTER
 HIGHLANDS PARKWAY
 SMYRNA, GA

ORIGINAL ISSUE DATE: 4-4-05 PERMIT SET

REVISIONS	DATE	DESCRIPTION
1	5-27-05	PERMIT COMMENTS
2		
3		
4		
5		
6		
7		
8		
9		
10		

SITE PLAN
 Project Number 20030070
A-1



LOWER FLOORS
 22,705 SQ. FT.
 UPPER FLOORS
 12,423 SQ. FT.

USAGE: SHOPPING CENTER
 TOTAL = 34,128 SF FOR BOTH

1 SITE PLAN
 SCALE: 1/16" = 1'-0"