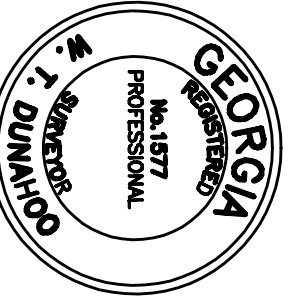
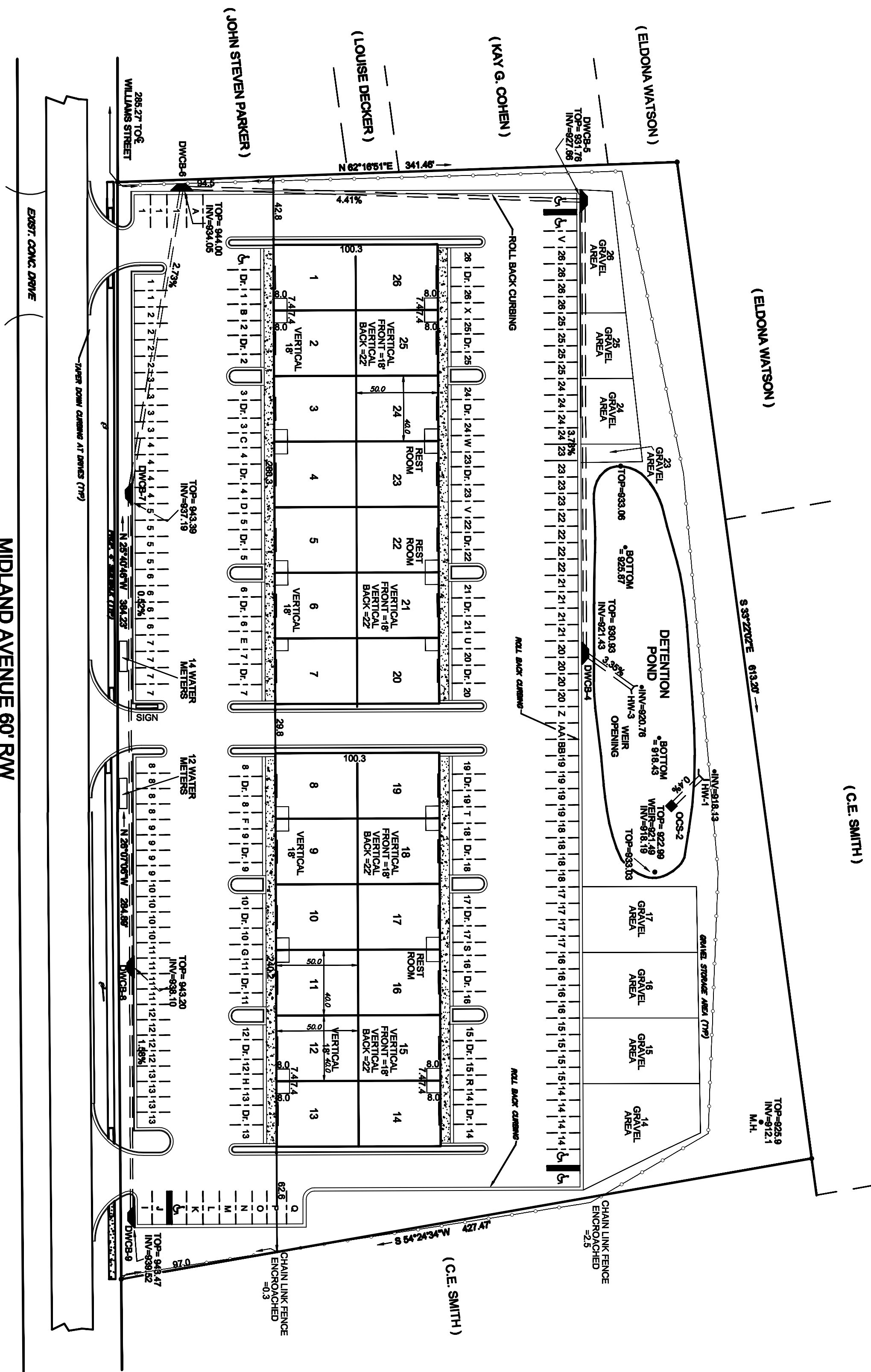


A TOPCON GTS-28 TOTAL STATION was used to obtain the linear and angular measurements used in the preparation of this plat. The field data upon which this plat is based has a closure precision of one foot in 21,800 feet and an angular error of 2" per angle point and was adjusted using the COMPASS rule. This survey has been calculated for closure and is found to be accurate within one foot in >119,000 feet.



IN MY OPINION, THIS PLAT IS A CORRECT REPRESENTATION OF THE LAND PLATTED AND HAS BEEN PREPARED IN CONFORMITY WITH THE MINIMUM STANDARDS AND REQUIREMENTS OF OCGA 44-3-83 (A)

CLOSING PLAT FOR
STATE OF GEORGIA

WINDER COMMONS

CITY	GMD	COUNTY	SCALE	DATE
WINDER	243	BARROW	1"=90'	03-20-07

W. T. DUNAHOO AND ASSOCIATES

- NOTE -
ADDRESS IS 136 EAST MIDLAND AVE.
+ UNIT NUMBER, WINDER GEORGIA 30080

IPF - IRON PIN FOUND
IPS - IRON PIN SET - 1/2" OPEN TOP

P.O. BOX 408
WINDER, GA 30090
WINDER, GEORGIA